



# vynckier

## ENCLOSURE SYSTEMS INC.



### VJ Push Button Enclosures - NEMA 4X Rated Non-Metallic Enclosures

#### \* Prefix

VJ: Flat opaque cover

RVJ: Raised opaque cover

#### \*\* Suffix

WPB: 30.5 mm (NEMA sized) push-button holes and stainless steel corner screws

W: Stainless steel corner screws

HW: Stainless steel continuous hinge and stainless steel corner screws

HWPL: Stainless steel continuous hinge and stainless steel padlockable latch(es)

HWLL: Stainless steel continuous hinge and stainless steel hinge latch(es)

NHW: Non-metallic hinges and stainless steel corner screws

NHWPL: Non-metallic hinges and stainless steel padlockable latch(es)

NHWLL: Non-metallic hinges and stainless steel twist latch(es)

\* Available with NEMA or IEC sized push button holes in any configuration.

\* Available with hinges and/or latches

#### Features

- 7 available sizes from 6" x 6" to 18" x 16" (H x W).
- All VJ WPB enclosures were designed to meet the Joint Industrial Council (JIC) standards in the United States.
- Enclosures are maintenance free and corrosion resistant.
- Bases and covers are made from hot compression molded halogen free, self extinguishing fiberglass reinforced polyester (FRP) that can withstand continuous temperatures from -58°F to 302°F (-50°C to 150°C) and momentary exposure to temperatures up to 392°F (200°C).
- All enclosures can be easily modified to customer specifications.
- Gaskets are made from continuously poured polyurethane foam.
- Molded on mounting flanges increase strength.
- Corner ribs reinforce strength in the cover corners.

#### Applications

VJ WPB enclosures are designed for use as electrical push-button enclosures in highly corrosive environments and provide protection for equipment and operators from indirect electrical contact.

#### Standards

IEC 60529 (IP66)

IEC 60439-1

IEC 50298

EN 60529 (IP66)

EN 60439-1

EN 50298

#### Approvals

UL Listed Types 3, 3R, 4, 4X, 12 & 13

CSA 3, 3R, 4, 4X, 12 & 13

AS Australian Standards 3131-1991

EExell, INTEX 84.102.378 U

LLOYD'S Register of Shipping

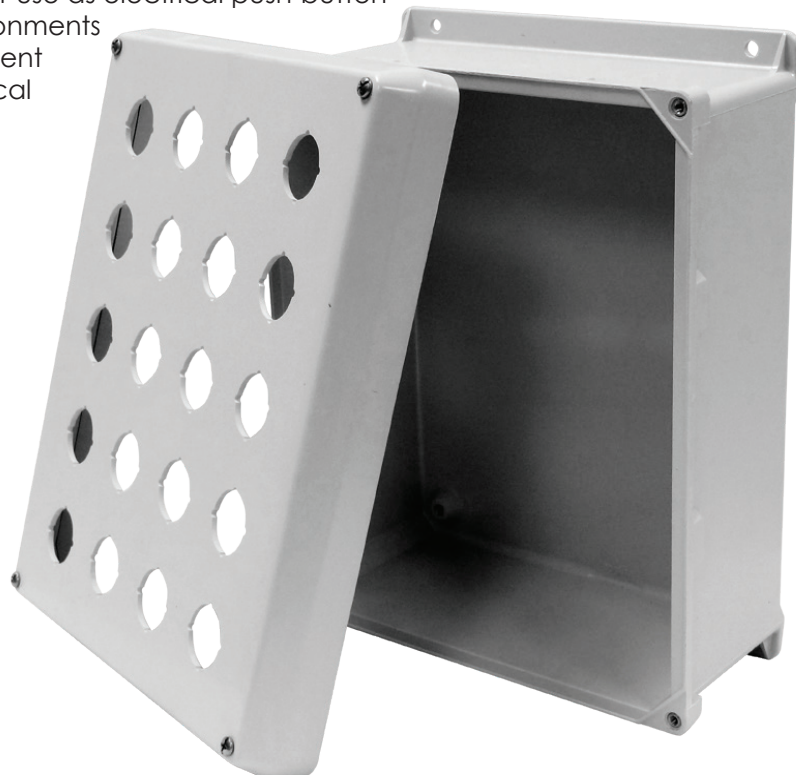
BASEEFA

KEMA

CEBEC

RoHS

CE



# VJ PB Series Data Sheet

Rev 01/12/16





# VJ PB Series Data Sheet

Part Number	Exterior Dimensions	Interior Dimensions	Weight	Back Plate	Push Button Holes
	H x W x D Inches (mm)	H x W x D Inches (mm)	Lbs (kg)	A: Aluminum S: Steel N: Non-Metallic	(Quantity) Size
VJ606WPB4	7.31 x 7.31 x 4.92 (186 x 186 x 125)	6 x 6 x 4.64 (152 x 152 x 118)	2.8 (1.27)	MP606A MP606S MP606N	(4) 30.5 mm
VJ806WPB6	9.31 x 7.31 x 4.92 (236 x 186 x 125)	8 x 6 x 4.64 (203 x 152 x 118)	3.8 (1.72)	MP806A MP806S MP806N	(6) 30.5 mm
VJ1008WPB9	11.31 x 9.31 x 5.43 (287 x 236 x 138)	10 x 8 x 5.15 (254 x 203 x 131)	4.8 (2.18)	MP1008A MP1008S MP1008N	(9) 30.5 mm
VJ1008WPB12	11.31 x 9.31 x 5.43 (287 x 236 x 138)	10 x 8 x 5.15 (254 x 203 x 131)	4.8 (2.18)	MP1008A MP1008S MP1008N	(12) 30.5 mm
VJ1210WPB16	13.31 x 11.31 x 5.60 (338 x 287 x 142)	12 x 10 x 5.27 (305 x 254 x 134)	6.3 (2.86)	MP1210A MP1210S MP1210N	(16) 30.5 mm
VJ1210WPB20	13.31 x 11.31 x 5.60 (338 x 287 x 142)	12 x 10 x 5.27 (305 x 254 x 134)	6.3 (2.86)	MP1210A MP1210S MP1210N	(20) 30.5 mm
VJ1412WPB25	15.31 x 13.31 x 6.60 (389 x 338 x 168)	14 x 12 x 6.27 (356 x 305 x 159)	8.6 (3.90)	MP1412A MP1412S MP1412N	(25) 30.5 mm
VJ1614WPB30	17.31 x 15.31 x 6.67 (440 x 389 x 169)	16 x 14 x 6.41 (406 x 356 x 163)	10.6 (4.81)	MP1614A MP1614S MP1614N	(30) 30.5 mm
VJ1816WPB42	19.31 x 17.31 x 9.58 (490 x 440 x 243)	18 x 16 x 9.33 (457 x 406 x 237)	14 (6.35)	MP1816A MP1816S MP1816N	(42) 30.5 mm

Custom push button solutions available...

