

Cree® CR-T Series

LED Retrofit Downlight



BETTER LIGHT. FASTER PAYBACK.

Higher Lumen Performance

The CR-T Series provides more lumens, perfect for high ceiling residential and commercial applications. The CR-T Series also offers higher efficacy and longer life than compact fluorescent lamps, with the beautiful light quality that you would expect from an incandescent.

High Color Quality Without the High Price Tag

The CR-T Series features 90+ high CRI light, instant on, smooth dimming down to 5% and a deep recess that reduces uncomfortable glare and improves clarity, all with a fast payback. The beautiful high CRI light delivers exceptional color quality, making colors appear more vibrant, rich and natural. These ENERGY STAR® qualified luminaires have a higher standard of performance, opening up commercial and residential opportunities for more incentives and rebates available from utilities.

Multiple Installation Options

Designed for retrofit applications as well as new construction, the new CR-T Series Downlights are perfect for 4, 5, and 6 inch recessed cans with E26 or GU24 sockets. These downlights are perfect for both indoor and outdoor applications and are rated for dry, damp, and wet locations.

CREE  TM

CREE® CR-T SERIES LED DOWNLIGHT

The CR-T Series LED downlights provide efficacy that is up to twice that of compact fluorescents, while achieving better color quality with a CRI of 90+. Designed to easily install into existing IC or non-IC four-inch, six-inch and many five-inch housings, dimmable down to 5% with widely available traditional dimmers and ENERGY STAR® qualified, this product is ideal for use in both residential and light-commercial new construction and retrofit applications.

Performance Summary

Lumens: CR4T™- 790 Lumens, CR6T™- 825, 1100, 1600 Lumens

Efficacy: Up to 75 LPW

Input Power: 10.5 - 21 watts

Input Voltage: 120V

CCT: 2700K, 3000K, 3500K and 4000K

CRI: 90+

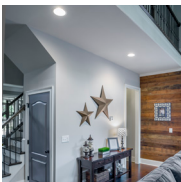
Controls: Dimming to 5%

Limited Warranty†: 5-year limited warranty

Features

- Deep recess trim for reduced glare
- ENERGY STAR® qualified
- cULus Classified
- Suitable for dry, damp and wet locations
- Meets CEC Title 20/ Title 24 standards
- 50,000 hour lifetime
- Fits in existing 4" or 5/6" housing
- Instant-on technology
- Up to 87 percent energy savings against comparable incandescent lighting

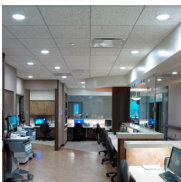
Applications



Residential and Commercial Lighting

If you're looking to save on the cost of installing cans throughout new construction or a renovation, consider Cree's family of downlights. Our CR-T Series downlights are easily installed in most 4" or 6" recessed can light fixtures with either E26 or GU24 socket types, providing flexibility while saving you time and money.

Cree's downlights give you versatility as well as cost efficiency for large commercial residential spaces, such as hotels, apartment complexes and condos. They are an excellent choice for closets, storage areas, attics, hallways and more.



Healthcare

Cree's CR-T Series downlights are ideal for extended care facilities, such as nursing homes and rehabilitation centers. Our 90+ CRI light makes colors true and natural, minimizing both patient and staff fatigue while improving visibility for diagnosing and treating patients.

CR-T SERIES



4-inch

6-inch



Both E26 Edison based and GU24 sockets included for use with either socket type.

* Performance varies based on dimmer used. Visit lighting.cree.com for dimmer compatibility information.

** Based on 3 hours average daily use.

† See lighting.cree.com/warranty for warranty terms.

Visit lighting.cree.com or contact a Cree lighting representative to learn more.

info@cree.com | 800.236.6800

© 2018 Cree, Inc. All rights reserved. For informational purposes only. Not a warranty or specification. See lighting.cree.com/warranty for warranty and specifications. Cree® is a registered trademark of Cree, Inc. and the Cree logo, CR4T™ and CR6T™ are trademarks of Cree, Inc. ENERGY STAR® is a registered trademark of the U.S. EPA. The UL logo is a registered trademark of UL LLC. CAT/SSHT-C114 Rev. Date: 08/09/2018

