

# Cree® LXB Series

LED Linear High-Bay Luminaire



## ONE-FOR-ONE REPLACEMENT. TWO-FOR-ONE PERFORMANCE.

### Superb Light Quality and Performance Matched to Your Application

The LXB Series High-Bay luminaire offers dominant performance in unconditioned applications for mounting heights ranging from 12 to 50+ ft. The LXB Series offers exceptional thermal management with operating temperatures from -30°C to as high as 55°C (-22°F to +131°F) and lumen packages from 12,000 to 60,000 lumens. No matter the application — high ceilings, high ambient temperatures or high-profile spaces, the LXB Series delivers proper illumination without overlighting or sacrificing performance.

### Replaces Fluorescents and HID 1:1 and Outperforms Them 2:1

The LXB Series' linear form factor means you can use existing wiring and mounting hardware for quick and simple 1:1 replacement of existing linear fluorescent fixtures. With dramatically improved illumination, energy savings and a useful life several times that of a typical fluorescent, the LXB Series offers up to 65% energy savings and a higher ambient operating range versus traditional technologies.

### Engineered for a Lifetime of Maximum Savings and Performance

The LXB Series offers industrial-grade durability and virtually maintenance-free operation for an extended lifetime. Stocking replacement lamps and ballasts are a thing of the past, along with zero warm-up, restrike times and hazardous bulb disposals. With DLC Premium certification at up to 160 LPW, projects offer paybacks as low as 1.5 years and maximum rebate eligibility.

**CREE** 

# LXB SERIES LED LINEAR HIGH-BAY LUMINAIRE

For high-bay spaces, Cree's LXB Series Linear High-Bay luminaire creates a safe, productive and appealing environment with outstanding efficacy, reliability and lifetime performance. Offering multiple packages from 12,000 to 60,000 lumens covering mounting heights from 12 to 50+ feet, the LXB Series is the ideal solution for warehouses, gymnasiums, light manufacturing and open spaces where temperatures reach up to 131°F. With multiple lumen packages, accessories and options, the LXB Series offers the flexibility to optimize LED performance in your space.

## BUILT TO EXCEED EVEN HIGH EXPECTATIONS

Durable, powder-coated, heavy gauge steel endcaps

Optional factory-installed integrated battery pack (18L/24L) provides code-compliant egress

Standard V hanger included

Extruded aluminum heat sink maximizes LED performance up to 55°C (-22°F to +131°F)

Light-weight, low-profile, slim design

Up to 160 LPW for exceptional energy savings

80+ CRI for better visibility and improved quality control

Uniform light quality supports improved productivity and safety

Exceptional thermal management for long lifetime



## LXB SERIES ENERGY SAVINGS VS. TRADITIONAL TECHNOLOGIES

	LXB SERIES 24L	SIX LAMP 54W T5HO	400W HID
<b>Input Watts</b>	157	365	410
<b>LXB Savings over Traditional</b>		<b>57%</b>	<b>65%</b>

### KEY APPLICATIONS

- Mounting heights from 12' to 50'+
- Retail / Big-box Stores
- Manufacturing
- Airport Hangars
- Warehouse / Distribution Spaces
- Convention Centers
- Auditoriums
- Gymnasiums

### LXB Series Key Features

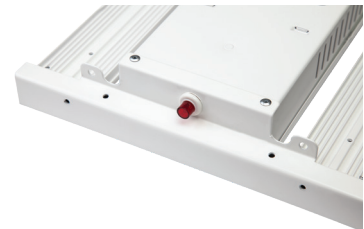
Highly-efficient LEDs Paired With The Latest In Driver Technology To Dim To 5%



V-Hook Hangers Included Standard In The Box



Optional Factory Installed Battery Back-Up (18L and 24L Lumen Packages)



10kV/5kA In-Line Standard Transient Protection



Low-Profile, Lightweight, Compact Design Makes The LXB Series Easy To Handle



Extruded Aluminum Heat Sinks



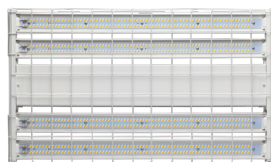
### Field-Installable Accessories

Multiple Mounting Options



Pendant and surface mount box with through-wire option.

Heavy-Duty, Full-Body Wire Guard



Easy-to-install, heavy gauge wire guard powder coated to match.

Occupancy Photocell



Two lens options with easy turn-dial adjust.

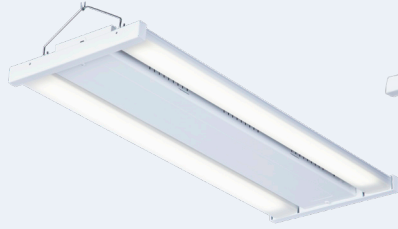
Frosted Acrylic Lens



Diffused illumination with enhanced uniformity and glare-free performance.

## LXB Series Linear High-Bay

LXB Series 12L



LXB Series 18L and 24L



LXB Series 28L



LXB Series 40L



LXB Series 60L



### COMPARABLE LINEAR HIGH-BAY LIGHT SOURCES

LXB SERIES PERFORMANCE PACKAGES	FLUORESCENT LAMP EQUIVALENT	METAL HALIDE EQUIVALENT
	LXB Series savings vs. lamps <b>55%</b>	LXB average savings vs. MH <b>65%</b>
<b>12L</b>	4-lamp T8 , 2-lamp T5HO	175W MH
<b>18L</b>	6-lamp T8, 4-lamp T5HO	200-250W MH
<b>24L</b>	8-lamp T8, 6-lamp T5HO	400W MH
<b>28L</b>	6-lamp,8-lamp T5HO	400W PSMH
<b>40L</b>	8-lamp T5HO	750W MH
<b>60L</b>		875W MH - 1000W MH

### PERFORMANCE SUMMARY

**Delivered Lumens:** 12,000 – 60,000 lumens

**Input Power:** 80 – 365 watts

**Efficacy:** Up to 162 LPW

**CRI:** 80+

**CCT:** 4000K, 5000K

**Input Voltage:** 120-277 VAC

**Limited Warranty:** 5 years

**Mounting:** Suspended, Pendant, Surface

**Dimming:** 0-10V dimming to 10% or multi-level occupancy sensor accessory

Compact, low-profile and easy to handle

### FIELD-INSTALLABLE OPTIONS SAVE TIME, MONEY AND SKUS

The LXB Series is designed to make selecting and configuring the right fixture for your space a snap. Right-sized components and opt-in features remove the cost and weight of unneeded capacities. With a wide range of user-installable options and accessories, the LXB Series means fewer fixture SKUs to inventory, making it flexible enough for distributor stock and flow.

- Lenses
- Occupancy sensors
- Photocells
- Wireguards
- Cord/plug
- Mounting hardware

Visit [lighting.cree.com](http://lighting.cree.com) or contact a Cree lighting representative to learn more.

[info@cree.com](mailto:info@cree.com) | 800.236.6800

© 2018 Cree, Inc. All rights reserved. For informational purposes only. Not a warranty or specification. See [lighting.cree.com/warranty](http://lighting.cree.com/warranty) for warranty and specifications. Cree® and the Cree logo are registered trademarks of Cree Inc. The UL logo is a registered trademark of UL, LLC. The DLC Premium logo is a registered trademark of Efficiency Forward, Inc. CAT/SSHT-C115 Rev. Date: 09/27/18

