

AFRC30 DuraLED Sculptor II Garage Lighter



AFRC30 Ordering Guide

LEDicated

Fixture:

Die Cast and Sand Cast Aluminum Housing, Integral Heat Sinking. Includes 3' Cord.

Wattage:

37w Array: 37w, System: 41w; (70-150w HID Equivalent)
65w Array: 65.3w, System: 72w; (150-250w HID Equivalent)
100w Array: 100w, System: 111w; (150-250w HID Equivalent)

Listing & Ratings:

CSA: Listed for Wet Locations, ANSI/UL 1598, 8750; IP65 (IP66 with Pendant and Trunnion Mounts Only)

Controls & Options:

Motion Sensors, Surge Protection, Fuses, Battery Backup

MODEL AFRC30Q DuraLED Sculptor II Round Garage Lighter

OPTICS Rectangular Wide (L), Type V (F)

WATTAGES 1x37w, 1x65w, 1x100w (100w Type V only)

DRIVER 120-277v (U), 347-480v (H)

CCT 4000K (4K), 5000K (5K)

COLOR Bronze (Z), White (W) or Custom Color - Consult Factory

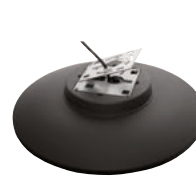
MOUNTING Easy-Hang Bracket (NM), Trunnion (T) & Pendant Mount (PA)

OPTIONS See Specification Page for Options.



NM Mount

T & PA Mounts



Easy Hang Mount



Trunnion



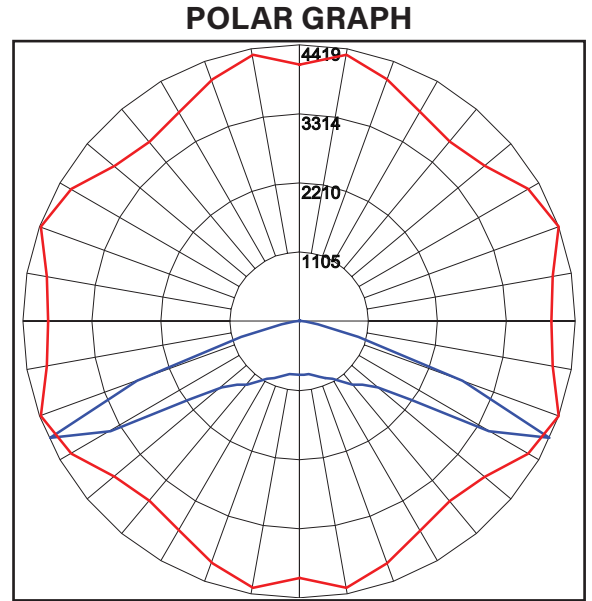
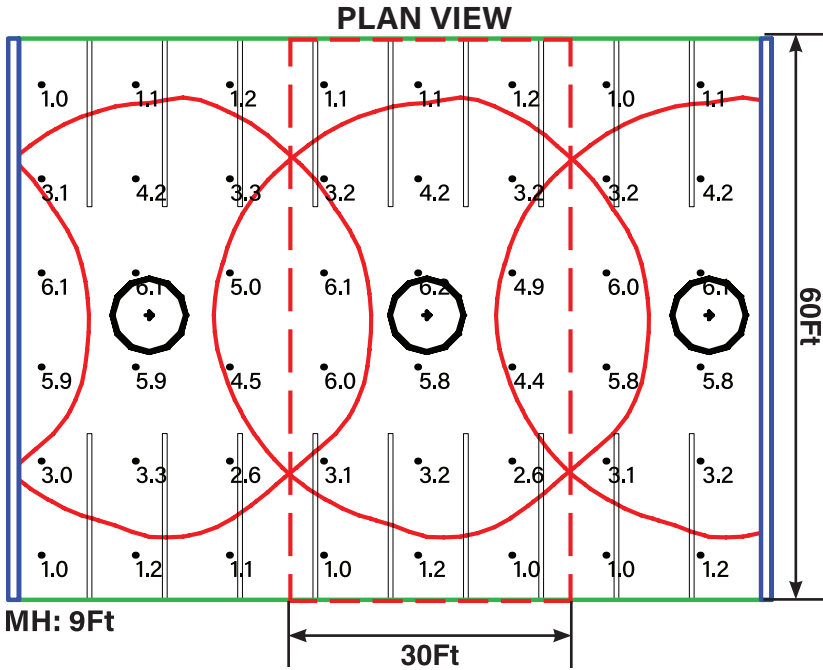
Pendant

Mounting Options

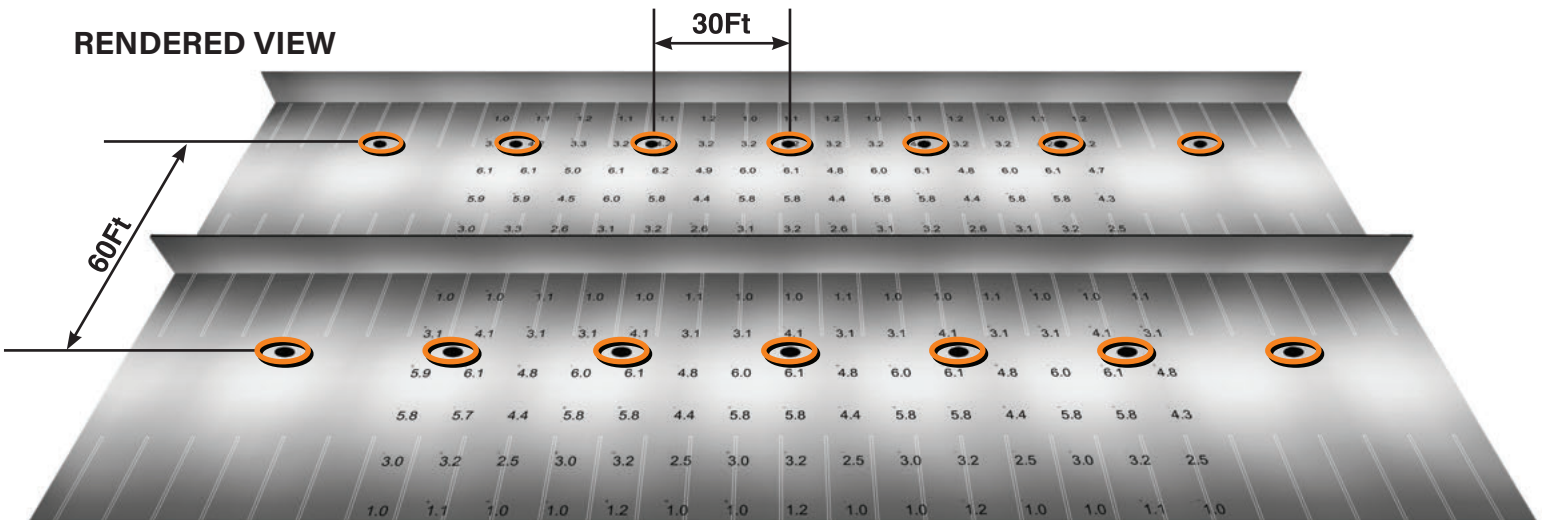
AFRC30 DuraLED Sculptor II Garage Lighter

TYPICAL GARAGE LAYOUT

30ft X 60ft Bay; 9ft Mounting Height



- Controlled full cutoff optics designed specifically for Parking Garages spread light uniformly
- Peak Candlepower is at 25 degrees to driving lane to lower glare



AFRC30QL1X37 3.0 FTC AVG, 6.2 FTC MAX, 1.0 FTC MIN, 3.2:1 AVG/MIN, 6.2:1 MAX/MIN

Exceeds IES RP-20-98 of 1.0 FTC MIN and MAX/MIN of 10:1