

B81Q DuraLED Contemporary Bollard



Project Information	
Project Name: _____	Fixture Type: _____
Complete Catalog #: _____	Date: _____
Comments: _____	

The DuraGuard B81Q DuraLED Contemporary Bollard with SoftLED LumaLens opal UV-Stabilized polycarbonate lens is designed to replace HID lighting systems up to 50w MH or HPS. These fixtures are ideal for retail centers, industrial parks, schools and universities, public transit and airports, office buildings and medical facilities.



SPECIFICATIONS AND FEATURES:

HOUSING:

Extruded Aluminum Housing with Flush Mounting Base & Vandal-Resistant Screws, Internal Driver Tray for Easy Maintenance.

LISTING & RATINGS:

CSA: Listed for Wet Locations, ANSI/UL 1598, 8750 IP65 Sealed LED Compartment.

FINISH:

Textured Architectural Bronze or Black Powdercoat Finish Over a Chromate Conversion Coating. Custom Colors Available Upon Request.

LENS:

SoftLED LumaLens Opal UV-Stabilized Polycarbonate Vandal-Resistant Lens.

MOUNTING OPTIONS:

Mounting Kit with 8" Zinc-Plated Anchor Bolts, Included.

DURALED LED:

Aluminum Boards

WATTAGE:

Array: 16w, System: 17.7w (up to 35w HID equivalent)
Array: 22w, System: 24.8w (up to 50w HID equivalent)

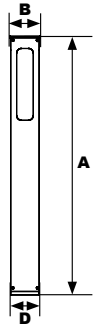
DRIVER:

Electronic Driver, 120-277V, 50/60Hz; Less Than 20% THD and PF>0.90. Standard Internal Surge Protection 2kV. 0-10V Dimming Standard for a Dimming Range of 100% to 10%; Dimming Source Current is 150 Microamps.

WARRANTY:

5-Year Warranty for -20°C to +40°C Environment.

See Page 3 for Projected Lumen Maintenance Table.



Dimensions

Diameter 1 (B)	5" (128mm)
Diameter 2 (D)	4 3/4" (120mm)
Height (A)	43 3/4" (1100mm)

DuraLED TECHNOLOGY

Complete Units Ordering Information
Example: **B81QF1X22U5KLBSF**

B81Q DuraLED Cape Cod Bollard, Coastal Series

B81Q	F		U		L		
Model	Optic	Wattage	Driver	CCT	Lens	Color	Options
B81Q =DuraLED Contemporary Bollard	F =Wide Beam Spread	1X16 =16w 1X22 =22w	U =120-277V	3K =3000K 4K =4000K 5K =5000K		B =Black C =Custom (Consult Factory)	
L =SoftLED LumaLens Opal UV-Stabilized Polycarbonate Vandal-Resistant Lens							

SF=Single Fuse*
SP=Surge Protection
*120-277V Models Only.

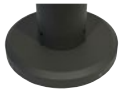


Specifications subject to change without notice.

B81Q DuraLED Contemporary Bollard



ACCESSORIES & REPLACEMENT PARTS:

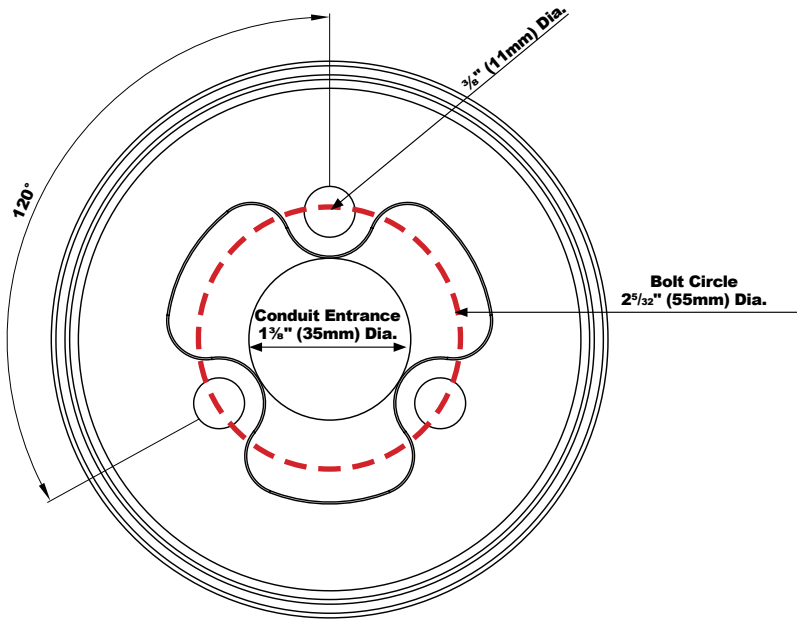


BREBASE*

*Shown Mounted

Mounting Accessories (Order Separately, Field Installed)	
BREBASE*	Bollard Retrofit Base Kit Adapts New Bollards to Most Existing Bolt Patterns. Fits all DuraGuard Bollards. Die Cast with Powdercoat Finish, Hardware Included. 1 1/2" Dia. x 1 1/2" H
*Specify Color: Z=Bronze, B=Black, C=Custom (Consult Factory)	

BASE DIMENSIONS:

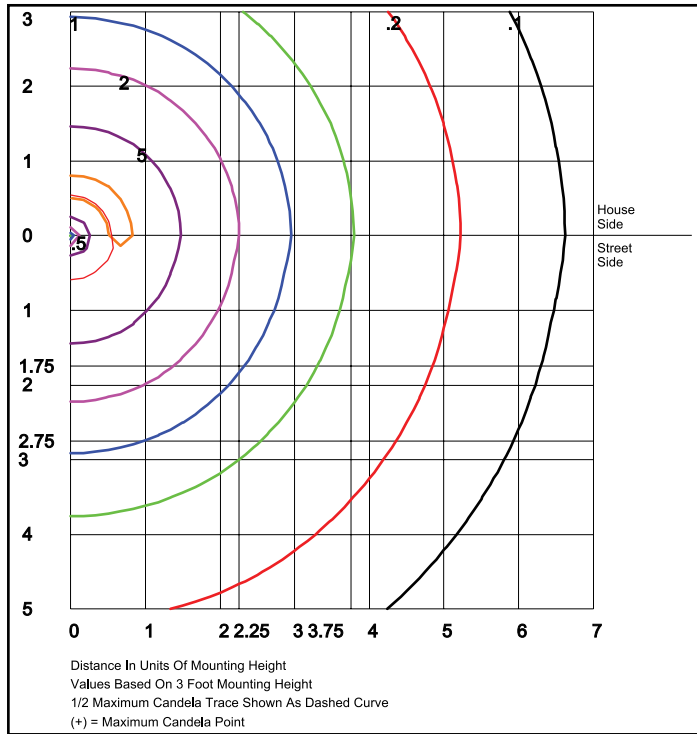


Specifications subject to change without notice.

B81Q DuraLED Contemporary Bollard



PHOTOMETRIC DATA



B81QF1X22U5KL
Type V, LumaLens
 Grid in feet, Mounting Height = 3 ft.

PHOTOMETRIC PERFORMANCE

Optic	CCT	Wattage (Catalog Logic)	
		16W (1X16)	22W (1X22)
		Input Watts	Delivered Lumens
B81 with LumaLens F=Type V Optic	3000K	1,905	2,620
	4000K	1,967	2,704
	5000K	2,043	2,809
	BUG Rating	B1-U4-G2	B1-U5-G2

PROJECTED LUMEN MAINTENANCE

Data shown for 5000 CCT		Compare to MH				
TM-21-11	Input Watts	Initial	25,000 Hrs	50,000 Hrs	100,000 Hrs	Calculated LED Life
L70 Lumen Maintenance @ 25°C / 77°F	All wattages up to and including 25w	1.00	0.96	0.92	0.84	187,000
L70 Lumen Maintenance @ 50°C / 122°F		1.00	0.94	0.89	0.78	136,000
L80 Lumen Maintenance @ 40°C / 104°F		1.00	0.95	0.91	0.81	106,000

NOTES:
 1. Projected per IESNA TM-21-11. Data references the extrapolated performance projections for the base model in a 25°C ambient, based on 10,000 hours of LED testing per IESNA LM-80-08.
 2. Compare to MH box indicates suggested Light Loss Factor (LLF) to be used when comparing to Metal Halide (MH) systems.