

# B11Q DuraLED Amber LED Side Light Bollard



<b>Project Information</b>	
Project Name: _____	Fixture Type: _____
Complete Catalog #: _____	Date: _____
Comments: _____	

The DuraGuard Amber LED B11Q Side Light Bollard provides full cutoff lighting for outdoor path, walkways and landscape areas using asymmetric optics designed to replace outdated Halogen and Compact Fluorescent lighting systems for wildlife, dark skies, or security applications requiring monochromatic AMBER light. LEDs operate between 585 and 595nm, greater than 560nm required for wildlife protection. These fixtures are ideal for retail centers, industrial parks, schools and universities, public transit and airports, office buildings and medical facilities.

## SPECIFICATIONS AND FEATURES:

### HOUSING:

Cast and Extruded Aluminum Housing with Flush Mounting Base, Flat Top.

### LISTING & RATINGS:

CSA: Listed for Wet Locations, ANSI/UL 1598, 8750 IP66 Sealed LED Compartment.

### FINISH:

Textured Architectural Powdercoat Finish Over a Chromate Conversion Coating. Custom Colors Available Upon Request.

### LENS:

Clear UV-Stabilized Polycarbonate Vandal-Resistant Lens

### MOUNTING OPTIONS:

Mounting Kit with 8" Zinc-Plated Anchor Bolts, Included.

### AMBER LED:

Aluminum Boards

### WATTAGE:

17w: Array: 17w, System: 18.7w

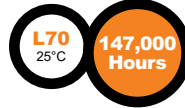
### DRIVER:

Electronic Driver, 120-277V, 50/60Hz; Less Than 20% THD and PF>0.90. Standard Internal Surge Protection 2kV. 0-10V Dimming Standard for a Dimming Range of 100% to 10%; Dimming Source Current is 150 Microamps.

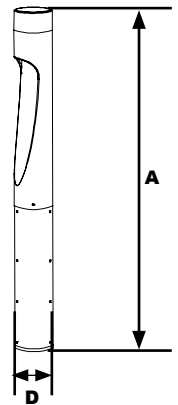
### WARRANTY:

5-Year Warranty for -40°C to +50°C Environment.

See Page 2 for Projected Lumen Maintenance Table.



Shown with GFCI



### Dimensions

Diameter (D)	4¾" (120mm)
Height (A)	43¾" (1100mm)

## DuraLED TECHNOLOGY

Complete Units Ordering Information  
Example: **B11QF1X17UAMCZSP**

# B11Q DuraLED Amber LED Side Light Bollard

## DuraLED Amber Series

B11Q	F	1X17	U	AM	C
Model	Optics	Wattage	Driver	CCT	Lens
	F=Asymmetric	1X17=17w	U=120-277V	AM=Amber	
<b>B11Q</b> =DuraLED Amber Side Light Bollard					
<b>C</b> =Clear Molded UV-Stabilized Polycarbonate Lens					

Color	Options
Z=Bronze	SF=Single Fuse*
B=Black	DF=Double Fuse*
P=Platinum	SP=Surge Protection
C=Custom	GF1=GFCI Outlet, 15A, 120V
(Consult Factory)	*120-277V Models Only.



Specifications subject to change without notice.

# B11Q DuraLED Amber LED Side Light Bollard

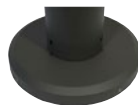


## ACCESSORIES & REPLACEMENT PARTS:

### Mounting Accessories (Order Separately, Field Installed)

**BREBASE\*** Bollard Retrofit Base Kit Adapts New Bollards to Most Existing Bolt Patterns. Fits all DuraGuard Bollards. Die Cast with Powdercoat Finish, Hardware Included. 1 1/2" Dia. x 1 1/2" H

\*Specify Color: Z=Bronze, B=Black, P=Platinum, C=Custom (Consult Factory)



**BREBASE\***

\*Shown Mounted

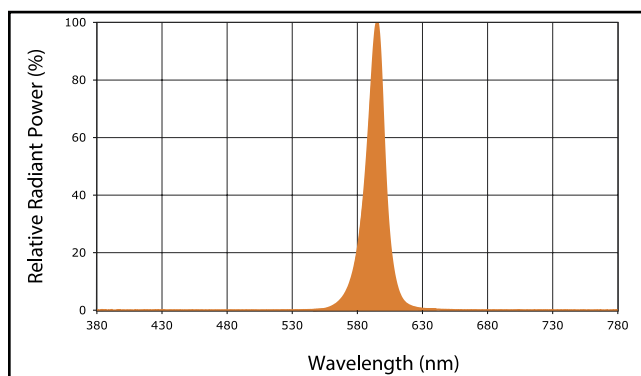
### Replacement Parts (Order Separately, Field Installed)

**BOADP1** Adapter Plate with Gaskets for Outlet Boxes. Fits DuraGuard Round Bollards. Die Cast with Bronze Powdercoat Finish.



**BOADP1**

## SPECTRAL CHART



## PHOTOMETRIC PERFORMANCE

LED Board Watts	Input Watts	Optics	Amber LED				
			Lumens	LPW	B	U	G
Amber 17w	18.7w	Asymmetrical	145	8	0	0	0

## PROJECTED LUMEN MAINTENANCE

Data shown for Amber LEDs		Compare to MH				
TM-21-11	Input Watts	Initial	25,000 Hrs	50,000 Hrs	100,000 Hrs	Calculated LED Life
L70 Lumen Maintenance @ 25°C / 77°F	17w	1.00	0.95	0.90	0.80	147,000
L70 Lumen Maintenance @ 50°C / 122°F		1.00	0.89	0.78	0.55	67,000
L80 Lumen Maintenance @ 40°C / 104°F		1.00	0.92	0.85	0.70	66,000

**NOTES:**

1. Projected per IESNA TM-21-11. Data references the extrapolated performance projections for the base model in a 25°C ambient, based on 10,000 hours of LED testing per IESNA LM-80-08.
2. Compare to MH box indicates suggested Light Loss Factor (LLF) to be used when comparing to Metal Halide (MH) systems.