

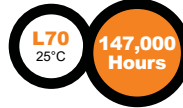
B9Q DuraLED Amber Orca Bollard, Coastal Series



| | |
|----------------------------|---------------|
| Project Information | |
| Project Name: | Fixture Type: |
| Complete Catalog #: | Date: |
| Comments: | |

The DuraGuard nautically inspired B9Q Amber LED Orca Bollard provides pedestrian and parking area lighting with a seaside flair. The specially designed UV-stabilized polycarbonate optics offer full-cutoff, excellently controlled uniform lighting designed to replace HID lighting systems for wildlife, dark skies, or security applications requiring monochromatic AMBER light. LEDs operate between 585 and 595 nm, greater than 560nm required for wildlife protection. These fixtures are ideal for a wide range of applications including parking areas, walkways and landscape accents.

SPECIFICATIONS AND FEATURES:



HOUSING:

Durable One-Piece Sand Cast Aluminum Housing Features 1/2" Thick Walls. Includes Flush Mounting Base & Vandal-Resistant Screws, Internal Driver Tray for Easy Maintenance.

LISTING & RATINGS:

CSA: Listed for Wet Locations, ANSI/UL 1598, 8750 IP65

FINISH:

Textured Architectural Bronze or Black Powdercoat Finish Over a Chromate Conversion Coating. Custom Colors Available Upon Request.

LENS:

Clear UV-Stabilized Polycarbonate Vandal-Resistant Lens

MOUNTING OPTIONS:

Mounting Kit with 8" Zinc-Plated Anchor Bolts, Included.

DURALED LED:

Aluminum Boards

WATTAGE:

17w: Array 17w, System 18.7w

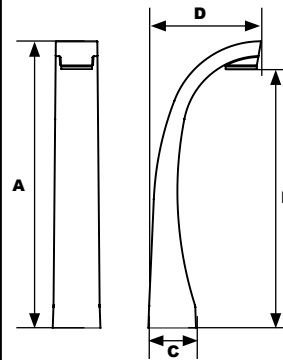
DRIVER:

Electronic Driver, 120-277V, 50/60Hz; Less Than 20% THD and PF>0.90. Standard Internal Surge Protection 2kV. 0-10V Dimming Standard for a Dimming Range of 100% to 10%; Dimming Source Current is 150 Microamps.

WARRANTY:

5-Year Warranty for -40°C to +50°C Environment.

See Page 2 for Projected Lumen Maintenance Table.



Dimensions

| | |
|-----------------------|-----------------|
| Height (A) | 36" (915mm) |
| Height (B) | 32 1/2" (824mm) |
| Base ² (C) | 6" (155mm) |
| Width (D) | 14 1/4" (362mm) |

DuraLED TECHNOLOGY

Complete Units Ordering Information
Example: **B9QC1X17UAMCZSP**

B9Q DuraLED Amber Orca Bollard, Coastal Series

DuraLED Amber Series

| B9Q | C | 1X17 | U | AM | C | | |
|--|------------|----------|------------|----------|--|--|---|
| Model | Optics | Wattage | Driver | CCT | Lens | Color | Options |
| B9Q=DuraLED Amber Orca Bollard, Coastal Series | C=Type III | 1X17=17w | U=120-277V | AM=Amber | C= Clear UV-Stabilized Polycarbonate Vandal-Resistant Lens | Z=Bronze B=Black C=Custom (Consult Factory) | SF=Single Fuse* DF=Double Fuse* SP=Surge Protection GF1=GFCI Outlet, 15A, 120V (Side Mount Only) *120-277V Models Only. |

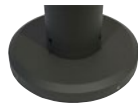


Specifications subject to change without notice.

B9Q DuraLED Amber Orca Bollard, Coastal Series



ACCESSORIES & REPLACEMENT PARTS:



BREBASE*



BOADP1

*Shown Mounted

**Mounting Accessories
(Order Separately, Field Installed)**

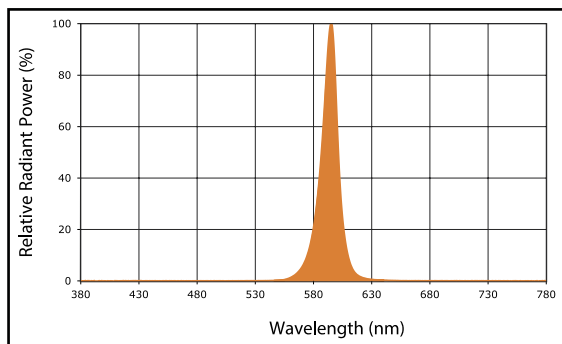
BREBASE* Bollard Retrofit Base Kit
Adapts New Bollards to Most Existing Bolt Patterns. Fits all DuraGuard Bollards. Die Cast with Powdercoat Finish. Hardware Included. 1 1/2" Dia. x 1 1/2" H

*Specify Color: Z=Bronze, B=Black, C=Custom (Consult Factory)

**Replacement Parts
(Order Separately, Field Installed)**

| | |
|--------|---|
| B9LFB | Lens Frame, Black Finish |
| BOADP1 | Adapter Plate with Gaskets for Outlet Boxes. Fits DuraGuard Round Bollards. Die Cast with Bronze Powdercoat Finish. |

SPECTRAL CHART



PHOTOMETRIC PERFORMANCE

| LED Board Watts | Input Watts | Optics | Amber LED | | | | |
|-----------------|-------------|----------|-----------|-----|---|---|---|
| | | | Lumens | LPW | B | U | G |
| Amber 17w | 18.7w | Type III | 1040 | 56 | 0 | 1 | 0 |

PROJECTED LUMEN MAINTENANCE

| Data shown for Amber LEDs TM-21-11 | Input Watts | Compare to MH | | | | | Calculated LED Life |
|---------------------------------------|-------------|---------------|------------|------------|-------------|---------|---------------------|
| | | Initial | 25,000 Hrs | 50,000 Hrs | 100,000 Hrs | | |
| L70 Lumen Maintenance @ 25°C / 77°F | 18.7w | 1.00 | 0.96 | 0.92 | 0.85 | 196,000 | |
| L70 Lumen Maintenance @ 50°C / 122°F | | 1.00 | 0.90 | 0.81 | 0.62 | 78,000 | |
| L80 Lumen Maintenance @ 40°C / 104°F | | 1.00 | 0.96 | 0.85 | 0.92 | 126,000 | |

NOTES:

1. Projected per IESNA TM-21-11. Data references the extrapolated performance projections for the base model in a 25°C ambient, based on 10,000 hours of LED testing per IESNA LM-80-08.
2. Compare to MH box indicates suggested Light Loss Factor (LLF) to be used when comparing to Metal Halide (MH) systems.