

PSRTN Retrofit Tenon Adaptor for 2³/₈" Tenons



Project Information	
Project Name: _____	Fixture Type: _____
Complete Catalog #: _____	Date: _____
Comments: _____	

The PSRTN Retrofit Tenon Adaptor allows installation of fixtures with 3" fitters on existing 2³/₈" pole tenons. Fits all DuraGuard P2 Tenons and Post Top fixtures.

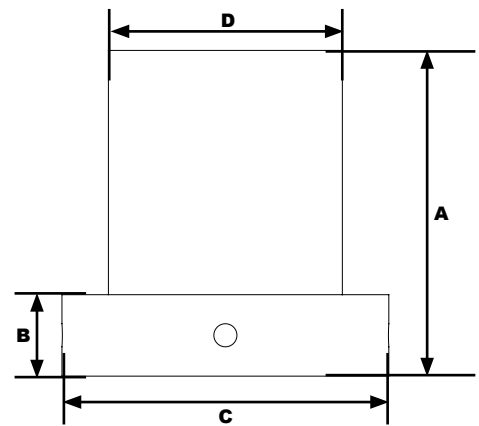
SPECIFICATIONS:

- Heavy duty one-piece die cast aluminum adaptor
- 4 Stainless Steel set screws at 90° secure adaptor to pole tenon
- Durable Black powdercoat finish over chromate conversion coating, custom colors are available
- Can be field installed or ordered factory-installed on our decorative post tops

FEATURES & BENEFITS:

- Pole Tenon Adaptor converts a 2³/₈" x 4" pole tenon to a 2⁷/₈" x 3" tenon
- Saves time and installation costs. No need to purchase new tenons, and installation time is reduced since the existing tenon does not have to be removed.
- Order factory-installed on DuraGuard decorative post tops for a no-hassle jobsite installation.

See Page 2 for Installation and Detailed Dimensional Information



Dimensions

Height 1 (A)	4" (102mm)
Height 2 (B)	1" (25mm)
Width (C)	4" (102mm)
Diameter (D)	2 ³ / ₈ " (73mm)

PSRTN Retrofit Tenon Adaptor for 2³/₈" Tenons

Ordering Information Example: **PSRTNB**

PSRTN	
Model	Color
PSRTN =Retrofit Tenon Adaptor for 2 ³ / ₈ " Tenons	B =Black C =Custom (Consult Factory)

Specifications subject to change without notice.

PSRTN Retrofit Tenon Adaptor for 2³/₈" Tenons



PSRTN Retrofit Tenon Adaptor for 2³/₈" Tenons

FACTORY-INSTALLED OPTION

By selecting the "P2A" catalog option when ordering DuraGuard Post Top fixtures, the Retrofit Tenon Adaptor will be pre-installed on the fixture, ready to be installed on the existing P2 pole tenon on the jobsite.



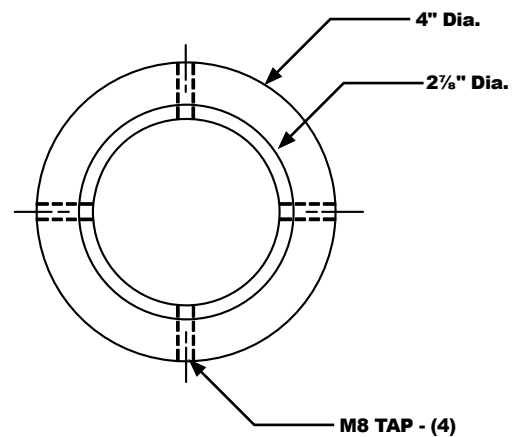
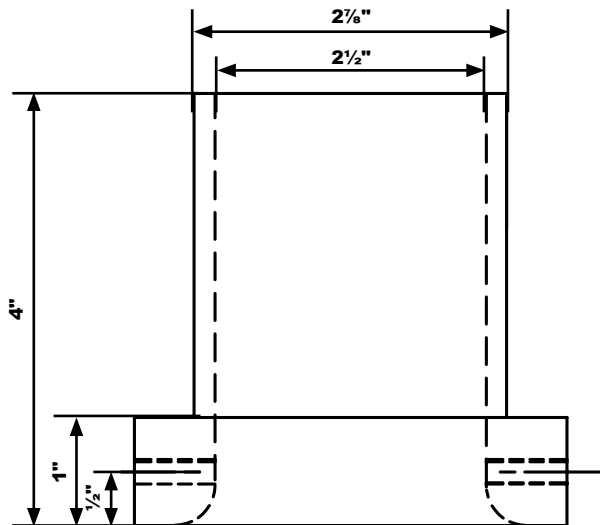
Pole Tenon Installation

Adaptor can be field-installed on existing 4" x 2³/₈" (P2) tenons. Place adaptor on existing tenon and secure with the included set screws.



Post Top Fixture Installation

Adaptor can be field-installed on fixtures with 3" fitters. Install adaptor into fixture and secure with fixture's mounting hardware. Place assembly over existing 4" x 2³/₈" (P2) tenon and secure to the tenon with the included set screws.



Specifications subject to change without notice.