



# Roxtec EzEntry™

Light-weight cable entry seals with composite frame.

The Roxtec EzEntry™ cable entry seals have light-weight composite frames and fit directly into standard openings. The seals are available in six sizes for cable capacity from 4 to 32 cables, and provide IP 66/67 protection.



- Corrosion resistant
- Area efficient
- Allows pre-terminated cables

## Product characteristics



IP/UL NEMA

## Structure of installation



Cabinets & enclosures

## Mounting type



Bolting

## Ratings & certificates

### Tightness

- IP 66/67, UL/NEMA 4,4X,12,13

## Frame dimensions

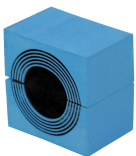
### in/lbs

The frame variants below are a limited selection. For the full range of frames and configurations, please visit [roxtec.com](https://www.roxtec.com).

Product	Frame openings	Packing space	External dimensions WxHxD	Aperture dimensions w x h	Weight	Art. no
EZENTRY 4 MINI FRAME ASSEMBLY	1	1.575 x 1.575	2.992 x 2.992 x 0.945		0.18	EZ00044000000
EZENTRY 16 FRAME ASSEMBLY	1	1.575 x 6.299	3.543 x 8.976 x 1.339	1.457(+0.039/-0) x 6.22(+0.079/-0)	0.97	EZ00016000000
EZENTRY 16 COUNTER FRAME			8.465 x 0.689 x 0.472		0.53	2CV0000000016
EZENTRY 24 FRAME ASSEMBLY	2	1.575 x 4.724	3.543 x 12.795 x 1.614	1.457(+0.039/-0) x 10.039(+0.079/-0)	1.6	EZ00024000000
EZENTRY 32 FRAME ASSEMBLY	2	1.575 x 6.299	3.543 x 15.945 x 1.614	1.457(+0.039/-0) x 13.976(+0.079/-0)	2	EZ00032000000
EZENTRY 4 FRAME ASSEMBLY	1	1.575 x 1.575	2.756 x 3.819 x 1.22	1.457(+0.039/-0) x 1.654(+0.079/-0)	0.46	EZ00040000000
EZENTRY 10 FRAME ASSEMBLY	1	1.575 x 3.937	2.756 x 6.614 x 1.22	1.457(+0.039/-0) x 4.252(+0.079/-0)	0.6	EZ00010000000

## Sealing components

### Sealing components



CM module with Multidiameter™



GM module with Multidiameter™



EM module with Multidiameter™



Lubricant



Assembly Gel

For detailed information, please visit [roxtec.com](https://www.roxtec.com).



# Pre-configured transit kits

in/lbs



Product	Configuration	External dimensions WxHxD	Aperture dimensions w x h	Weight	Art. no
EZENTRY 4/4	4x (0.138-0.650)	2.756 x 3.819 x 1.22	1.457(+0.039/-0) x 1.654(+0.079/-0)	0.49	EZ00000000044
EZENTRY 4 MINI/4	4x (0.138-0.650)	2.992 x 2.992 x 0.945	2.008(+0.039/-0) x 2.008(+0.079/-0)	0.29	EZ00000000440
EZENTRY 4 MINI/9	9x (0.138-0.413)	2.992 x 2.992 x 0.945	2.008(+0.039/-0) x 2.008(+0.079/-0)	0.37	EZ00000000490
EZENTRY 10/4	2x (0.138-0.650), 2x (0.374-1.280)	2.756 x 6.614 x 1.22	1.457(+0.039/-0) x 4.252(+0.079/-0)	0.84	EZ00000001004
EZENTRY 10/7	6x (0.138-0.650), 1x (0.374-1.280)	2.756 x 6.614 x 1.22	1.457(+0.039/-0) x 4.252(+0.079/-0)	0.86	EZ00000001007
EZENTRY 10/10	10x (0.138-0.650)	2.756 x 6.614 x 1.22	1.457(+0.039/-0) x 4.252(+0.079/-0)	0.77	EZ00000001010
EZENTRY 16/4	4x (0.374-1.280)	3.543 x 8.976 x 1.339	1.457(+0.039/-0) x 6.22(+0.079/-0)	1.4	EZ00000001604
EZENTRY 16/10	8x (0.138-0.650), 2x (0.374-1.280)	3.543 x 8.976 x 1.339	1.457(+0.039/-0) x 6.22(+0.079/-0)	1.5	EZ00000001610
EZENTRY 16/16	16x (0.138-0.650)	3.543 x 8.976 x 1.339	1.457(+0.039/-0) x 6.22(+0.079/-0)	1.5	EZ00000001616
EZENTRY 24/6	6x (0.374-1.280)	3.543 x 12.795 x 1.614	1.457(+0.039/-0) x 10.039(+0.079/-0)	2.6	EZ00000002406
EZENTRY 24/15	12x (0.138-0.650), 3x (0.374-1.280)	3.543 x 12.795 x 1.614	1.457(+0.039/-0) x 10.039(+0.079/-0)	2.6	EZ00000002415
EZENTRY 24/24	24x (0.138-0.650)	3.543 x 12.795 x 1.614	1.457(+0.039/-0) x 10.039(+0.079/-0)	2.5	EZ00000002424
EZENTRY 32/8	8x (0.374-1.280)	3.543 x 15.945 x 1.614	1.457(+0.039/-0) x 13.976(+0.079/-0)	3.3	EZ00000003208
EZENTRY 32/20	16x (0.138-0.650), 4x (0.374-1.280)	3.543 x 15.945 x 1.614	1.457(+0.039/-0) x 13.976(+0.079/-0)	3.3	EZ00000003220
EZENTRY 32/32	32x (0.138-0.650)	3.543 x 15.945 x 1.614	1.457(+0.039/-0) x 13.976(+0.079/-0)	3.4	EZ00000003232

The product information provided by Roxtec does not release the purchaser of the Roxtec system, or part thereof, from the obligation to independently determine the suitability of the products for the intended process, installation and/or use. Roxtec gives no guarantee for the Roxtec system or any part thereof and assumes no liability for any loss or damage whatsoever, whether direct, indirect, consequential, loss of profit or otherwise, occurred or caused by the Roxtec systems or installations containing components not manufactured by an authorized manufacturer and/or occurred or caused by the use of the Roxtec system in a manner or for an application other than for which the Roxtec system was designed or intended. Roxtec expressly excludes any implied warranties of merchantability and fitness for a particular purpose and all other express or implied representations and warranties provided by statute or common law. User determines suitability of the Roxtec system for intended use and assumes all risk and liability in connection therewith. In no event shall Roxtec be liable for indirect, consequential, punitive, special, exemplary or incidental damages or losses. The Roxtec products are offered and sold in accordance with the conditions of the Roxtec General Terms of Sales. The latest version of the Roxtec General Terms of Sales can be downloaded from <https://www.roxtec.com/en/about-us/about-roxtec/general-terms-of-sales/> We reserve the right to make changes to the product and technical information without further notice. Any errors in print or entry are no claims for indemnity. The content of this publication is the property of Roxtec International AB and is protected by copyright. This document was generated on: 2024-01-17