

# DuraLED Blade

## NSF 2 • IP66 • COLD STORAGE • LINEAR HIGH-BAY



<b>Project Information</b>	
Project Name: _____	Fixture Type: _____
Complete Catalog #: _____	Date: _____
Comments: _____	

-  **FOOD & BEVERAGE PROCESSING**
-  **MANUFACTURING & DISTRIBUTION**
-  **LIVESTOCK FARMING**

The DuraGuard Blade BLD2, BLD4, and BLD8 pendant and ceiling mount linear LED luminaire provides controlled illumination for general and task lighting designed for the harsh environments found in food processing and heavy manufacturing facilities. The Blade luminaire utilizes high efficiency LED light sources to reduce maintenance and lower energy costs. These high-quality durable fixtures are used in food and beverage processing, meat and poultry processing, livestock agricultural facilities, heavy industrial, and manufacturing facilities. Typical lighting applications include meat and poultry processing, food and beverage processing, cold storage, harsh environment industrial, vehicle wash facilities, pharmaceutical and scientific labs. Mounting heights of 8 to 25 feet can be used based on light level and uniformity requirements.

**SPECIFICATIONS AND FEATURES:**



**HOUSING:**

Heavy-Duty Extruded and Die Cast Aluminum Housing construction with silicone gaskets and stainless-steel fasteners. Drivers, sensors, and battery backup are mounted on modular internal trays for easy maintenance.

**LISTING & RATINGS:**

ETL: Listed for Wet Locations, ANSI/UL 1598, 8750. ETL Sanitation certified to National Sanitation Foundation ANSI NSF2, Food Splash Zone. IP66 Sealed LED Compartment, Pressure wash rated to 1400 PSI.

**FINISH:**

Powdercoat Finish Over a Chromate Conversion Coating.

**LENS:**

Clear UV-Stabilized Polycarbonate or Optional DR Acrylic Lens. Medium Distribution (70° Beam) or Wide Distribution (110° Beam) available.

**MOUNTING OPTIONS:**

Pendant Mount or Use Optional Stainless Steel Adjustable wall/Ceiling Bracket (Field Installed) available.

**DURALED LED:**

Aluminum Boards

**WATTAGE:**

- BLD2 – 2FT – 25w, 35w, or 50w Array
- BLD4 – 4FT – 50w, 75w, or 100w Array
- BLD8 – 8FT – 150w or 200w Array

**DRIVER:**

Electronic Driver, 120-277V, 50/60Hz or 347-480V, 50/60Hz; Less Than 20% THD and PF>0.90. Standard Internal Surge Protection 2kV to 6kV depending on wattage. 0-10V Dimming Standard for a Dimming Range of 100% to 10%; Dimming Source Current is 150 Microamps.

**CONTROLS:**

Fixtures Ordered with Factory-Installed Motion Sensor Controls are Internally Wired for Switching and/or 1-10V Dimming Within the Housing. Remote Direct Wired Interface of 1-10V Dimming is Not Implied and May Not Be Available, Please Consult Factory. Fixtures are Tested with DuraGuard Controls and May Not Function Properly with Controls Supplied By Others. Fixtures are NOT Designed for Use with Line Voltage Dimmers.

**WARRANTY:**

5-Year Warranty for -40°C to +55°C Environment.

See Page 5 for Projected Lumen Maintenance Table.

**BLADE BLD 4FT SHOWN  
2FT AND 8 FT AVAILABLE**



Shown with Optional Internal Microwave Sensor



**NSF 2 – FOOD SPLASH ZONE**

An ETL Sanitation Mark on Food Service Equipment indicates that equipment is tested to ANSI/NSF 2 is fit for use in the production of food intended for human consumption, or the equipment is fit for use in an environment where food intended for human consumption is produced.

**DuraLED TECHNOLOGY**



Specifications subject to change without notice.

# DuraLED Blade

## NSF 2 • IP66 • COLD STORAGE • LINEAR HIGH-BAY



We have custom and standard manufacturing options. Use this form to build your part number or reach out to our sales team for assistance.

### GET YOUR PRODUCTS FASTER WITH OUR QUICK SHIP PROGRAM

Multiple USA locations = 98-3-1 Quick Ship Program  
98% Fill Rate – 3 Day Lead Time – 1 Piece Minimum Order

**2 FEET**  
**4 FEET**  
**8 FEET**



Complete Units Ordering Information  
Example: **BLD2QM1X50U5KCPW**

### BLD2Q DuraLED 2 Foot Blade

BLD2Q			U			W	
Model	Optics	Wattage	Driver	CCT	Lens	Color	Options
<b>BLD2Q</b> =2 FT Blade DuraLED Food Processing Harsh Environment Linear Pendant Fixture	<b>F</b> =Medium Beam 70° Optics <b>W</b> =Wide Beam 110° Optics  *See Page 5 for Distribution Information.	<b>1X25</b> =25W <b>1X35</b> =35W <b>1X50</b> =50W	<b>U</b> =120-277V	<b>4K</b> =4000K <b>5K</b> =5000K	<b>CP</b> =Clear Polycarbonate* <b>CA</b> =Clear DR Acrylic  *Not recommended for Alkaline Industrial Cleaners.	<b>W</b> =White	<b>SF</b> =Single Fuse* <b>DF</b> =Double Fuse* <b>SP</b> =10 KV Surge Protector* <b>SP2</b> =20 KV Surge Protector* <b>S3</b> =Internal Microwave Sensor with Dimming for Mounting Heights of 25' or less <b>BU</b> =Battery Backup, 90 Minutes*  *120-277V Models Only.

Complete Units Ordering Information  
Example: **BLD4QW1X75U4KCAW**

### BLD4Q DuraLED 4 Foot Blade

BLD4Q						W	
Model	Optics	Wattage	Driver	CCT	Lens	Color	Options
<b>BLD4Q</b> =4 FT Blade DuraLED Food Processing Harsh Environment Linear Pendant Fixture	<b>F</b> =Medium Beam 70° Optics <b>W</b> =Wide Beam 110° Optics  *See Page 5 for Distribution Information.	<b>1X50</b> =50W <b>1X75</b> =75W <b>1X100</b> =100W	<b>U</b> =120-277V <b>H</b> =347-480V	<b>4K</b> =4000K <b>5K</b> =5000K	<b>CP</b> =Clear Polycarbonate* <b>CA</b> =Clear DR Acrylic  *Not recommended for Alkaline Industrial Cleaners.	<b>W</b> =White	<b>SF</b> =Single Fuse* <b>DF</b> =Double Fuse* <b>SP</b> =10 KV Surge Protector* <b>SP2</b> =20 KV Surge Protector* <b>S3</b> =Internal Microwave Sensor with Dimming for Mounting Heights of 25' or less <b>BU</b> =Battery Backup, 90 Minutes*  *120-277V Models Only.

Complete Units Ordering Information  
Example: **BLD8QM1X150U5KCPW**

### BLD8Q DuraLED 8 Foot Blade

BLD8Q						W	
Model	Optics	Wattage	Driver	CCT	Lens	Color	Options
<b>BLD8Q</b> =8 FT Blade DuraLED Food Processing Harsh Environment Linear Pendant Fixture	<b>F</b> =Medium Beam 70° Optics <b>W</b> =Wide Beam 110° Optics  *See Page 5 for Distribution Information.	<b>1X150</b> =150W <b>1X200</b> =200W	<b>U</b> =120-277V <b>H</b> =347-480V	<b>4K</b> =4000K <b>5K</b> =5000K	<b>CP</b> =Clear Polycarbonate* <b>CA</b> =Clear DR Acrylic  *Not recommended for Alkaline Industrial Cleaners.	<b>W</b> =White	<b>SF</b> =Single Fuse* <b>DF</b> =Double Fuse* <b>SP</b> =10 KV Surge Protector* <b>SP2</b> =20 KV Surge Protector* <b>S3</b> =Internal Microwave Sensor with Dimming for Mounting Heights of 25' or less <b>BU</b> =Battery Backup, 90 Minutes*  *120-277V Models Only.

# DuraLED Blade

## NSF 2 • IP66 • COLD STORAGE • LINEAR HIGH-BAY



### ACCESSORIES & REPLACEMENT PARTS:

#### Mounting Accessories (Order Separately, Field Installed)

BLDBSS Blade Surface Mounting Bracket (Includes 2)



**BLDBSS**  
One Bracket Mounts to Each End.

#### Accessories (Order Separately, Field Installed)

P17122 Remote Programming Tool for P17121



**P17122**

#### Replacement Parts (Order Separately, Field Installed)

P17121 Internal Microwave Sensor with Dimming & Remote Programming, 120-277V Only. See P17121 Spec. Page for Details.

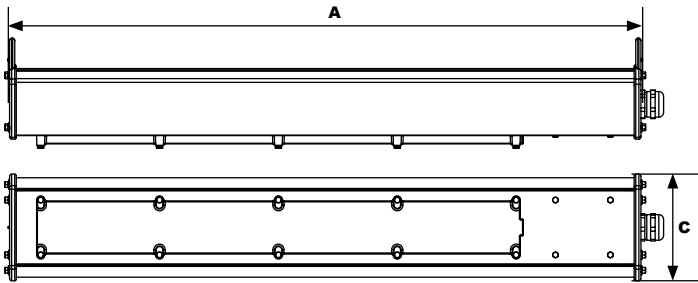
For Replacement Battery Backup, see the DuraGuard LED Battery Backup Specification Sheet.



**P17121**

### DIMENSIONS

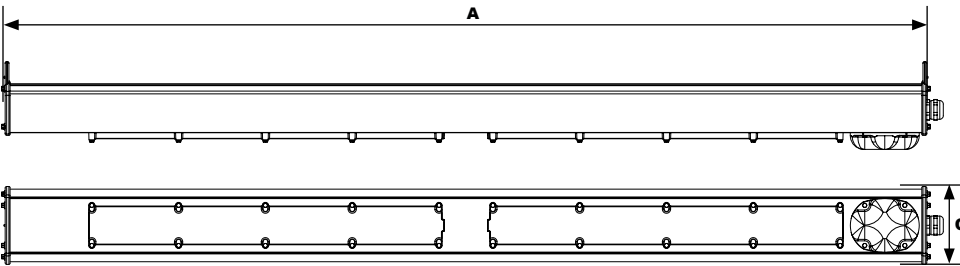
#### 2FT BLADE (BLD2Q)



#### Dimensions

**Width (C)** | 4.1" (103mm)  
**Length (A)** | 24" (610mm)

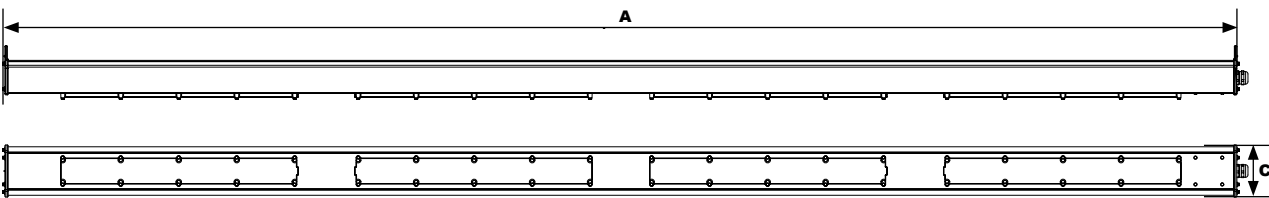
#### 4FT BLADE (BLD4Q)



#### Dimensions

**Width (C)** | 4.1" (103mm)  
**Length (A)** | 48" (1,219mm)

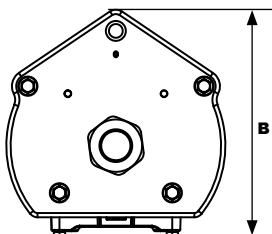
#### 8FT BLADE (BLD8Q)



#### Dimensions

**Width (C)** | 4.1" (103mm)  
**Length (A)** | 96" (2,438mm)

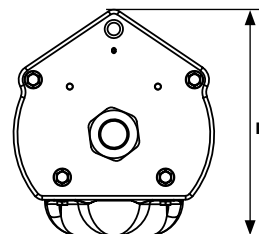
#### END CAP



#### Dimensions

**Heights (B)** | 4.1" (104mm)

#### END CAP WITH MICROWAVE SENSOR



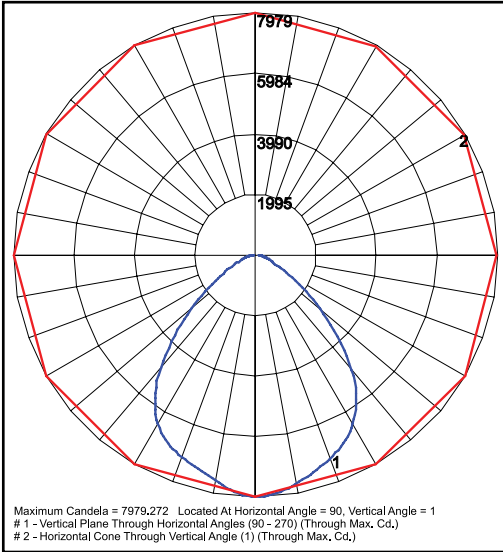
#### Dimensions

**Heights (B)** | 4.6" (116mm)

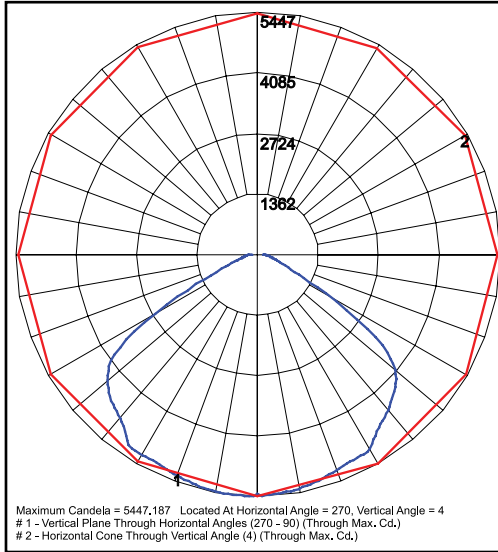
# DuraLED Blade NSF 2 • IP66 • COLD STORAGE • LINEAR HIGH-BAY



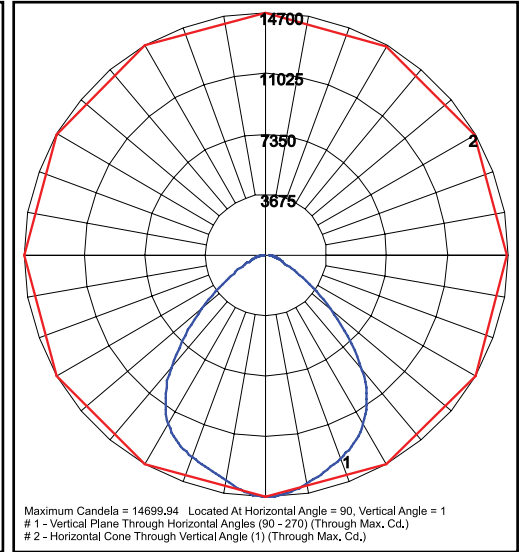
## PHOTOMETRIC DATA



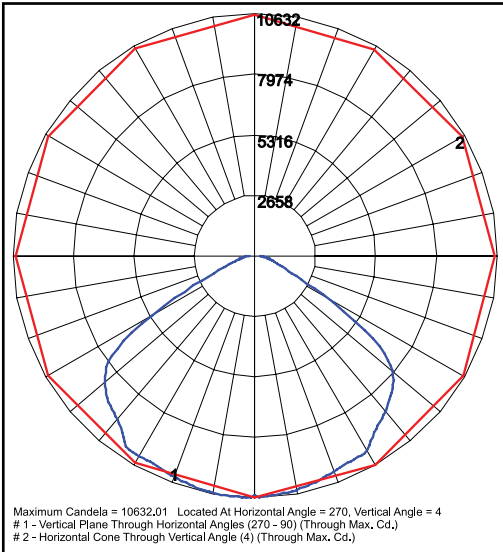
**BLD4QM1X100U4K**  
Grid in feet, Mounting Height = 25 ft.



**BLD4QW1X100U4K**  
Grid in feet, Mounting Height = 25 ft.



**BLD8QM1X200U4K**  
Grid in feet, Mounting Height = 25 ft.



**BLD8QW1X200U4K**  
Grid in feet, Mounting Height = 25 ft.

# DuraLED Blade

## NSF 2 • IP66 • COLD STORAGE • LINEAR HIGH-BAY

**DuraGuard**  
PRODUCTS INC.  
A QSSI Company



### PHOTOMETRIC PERFORMANCE

Optic	CCT	BLD2Q - 2FT			BLD4Q - 4FT			BLD8Q - 8FT		
		Wattage (Catalog Logic)	10W (1X22)	15W (1X15)	20W (1X22)	10W (1X22)	10W (1X22)	10W (1X22)	10W (1X22)	10W (1X22)
		Input Watts	25.0W	33.0W	49.6W	49.6W	75.5W	99.1W	151.1W	198.3W
		Delivered Lumens								
<b>M = Medium - 70° Beam</b>	4000K	4,109	5,424	8,152	8,152	12,409	16,288	22,924	30,007	
	5000K	4,212	5,559	8,356	8,356	12,719	16,695	23,497	30,757	
<b>W = Wide - 110° Beam</b>	4000K	4,028	5,317	7,992	7,992	12,165	15,968	22,630	30,640	
	5000K	4,129	5,450	8,192	8,192	12,469	16,367	23,196	31,406	

### PROJECTED LUMEN MAINTENANCE

Data shown for 5000 CCT TM-21-11	Watts	Compare to MH				Calculated LED Life
		Initial	25,000 Hrs	50,000 Hrs	100,000 Hrs	
<b>L70 Lumen Maintenance @ 25°C / 77°F</b>	50W - BLD2Q 100W - BLD4Q 200W - BLD8Q	1.00	0.96	0.92	0.88	188,000
<b>L70 Lumen Maintenance @ 50°C / 122°F</b>		1.00	0.96	0.91	0.87	174,000
<b>L80 Lumen Maintenance @ 40°C / 104°F</b>		1.00	0.96	0.91	0.87	117,000

#### NOTES:

1. Projected per IESNA TM-21-11. Data references the extrapolated performance projections for the base model in a 25°C ambient, based on 10,000 hours of LED testing per IESNA LM-80-08.
2. Compare to MH box indicates suggested Light Loss Factor (LLF) to be used when comparing to Metal Halide (MH) systems.