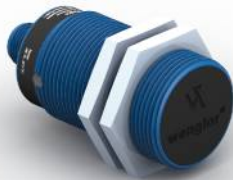


# Inductive Sensor

## Welding Field Resistant with Correction Factor 1

# I30A001

Part Number



- **Extended temperature range**
- **Greatest possible switching distances with correction factor 1**
- **Very good magnetic and electromagnetic immunity**
- **Very high switching frequency**

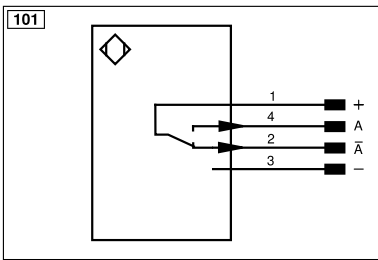
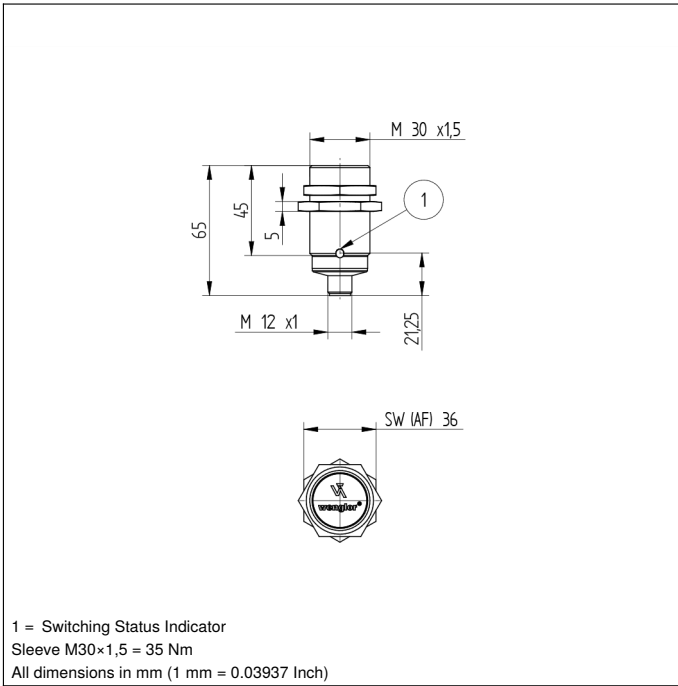
Welding field resistant inductive sensors with correction factor 1 offer a unique combination of technical performance features: increased switching distances for reliable object detection, high switching frequencies for applications with high process speeds and an extended temperature range for use under various ambient conditions. A switching status LED for diagnosis functions reduces system downtime. In order to simplify integration, all housing designs are available in flush or non-flush mounting variants.

### Technical Data

Inductive Data	
Switching Distance	15 mm
Correction Factors Stainless Steel V2A/CuZn/Al	1,06/1,06/1,07
Mounting	flush
Mounting A/B/C/D in mm	0/15/45/0
Switching Hysteresis	< 15 %
Electrical Data	
Supply Voltage	10...30 V DC
Current Consumption (U <sub>b</sub> = 24 V)	< 15 mA
Switching Frequency	2000 Hz
Temperature Drift (-25 °C < Tu < 60 °C)	10 %
Temperature Drift (Tu < -25 °C, Tu > 60 °C)	20 %
Temperature Range	-40...80 °C
Switching Output Voltage Drop	< 2,5 V
Switching Output/Switching Current	200 mA
Resistant to Magnetic Fields	200 mT
Short Circuit Protection	yes
Reverse Polarity and Overload Protection	yes
Protection Class	II
Protective Insulation, Rated Voltage	150 V
Mechanical Data	
Housing Material	CuZn; PTFE
Welding Field Resistant	yes
Full Encapsulation	yes
Degree of Protection	IP67
Connection	M12 × 1; 4-pin
Safety-relevant Data	
MTTFd (EN ISO 13849-1)	2157,87 a
Function	
Error Indicator	yes
PNP NC, PNP NO	●
Connection Diagram No.	<b>101</b>
Suitable Connection Equipment No.	<b>2</b>
Suitable Mounting Technology No.	<b>130</b>

### Complementary Products

PNP-NPN Converter BG2V1P-N-2M



Legend			
+	Supply Voltage +	nc	Not connected
-	Supply Voltage 0 V	U	Test Input
~	Supply Voltage (AC Voltage)	Ü	Test Input inverted
A	Switching Output (NO)	W	Trigger Input
Ā	Switching Output (NC)	W-	Ground for the Trigger Input
V	Contamination/Error Output (NO)	O	Analog Output
ȳ	Contamination/Error Output (NC)	O-	Ground for the Analog Output
E	Input (analog or digital)	BZ	Block Discharge
T	Teach Input	Amv	Valve Output
Z	Time Delay (activation)	a	Valve Control Output +
S	Shielding	b	Valve Control Output 0 V
RxD	Interface Receive Path	SY	Synchronization
TxD	Interface Send Path	SY-	Ground for the Synchronization
RDY	Ready	E+	Receiver-Line
GND	Ground	S+	Emitter-Line
CL	Clock	±	Grounding
E/A	Output/Input programmable	SnR	Switching Distance Reduction
IO-Link	IO-Link	Rx+/-	Ethernet Receive Path
PoE	Power over Ethernet	Tx+/-	Ethernet Send Path
IN	Safety Input	Bus	Interfaces-Bus A(+)/B(-)
OSSD	Safety Output	La	Emitted Light disengageable
Signal	Signal Output	Mag	Magnet activation
BI_D+/-	Ethernet Gigabit bidirect. data line (A-D)	RES	Input confirmation
ENo RS422	Encoder 0-pulse 0/0 (TTL)	EDM	Contactor Monitoring
PT	Platinum measuring resistor	ENARs422	Encoder A/Ā (TTL)
		ENBRs422	Encoder B/B̄ (TTL)
		ENA	Encoder A
		ENB	Encoder B
		AMIN	Digital output MIN
		AMAX	Digital output MAX
		Aok	Digital output OK
		SY In	Synchronization In
		SY OUT	Synchronization OUT
		OLT	Brightness output
		M	Maintenance
		rsv	Reserved
		Wire Colors according to DIN IEC 60757	
		BK	Black
		BN	Brown
		RD	Red
		OG	Orange
		YE	Yellow
		GN	Green
		BU	Blue
		VT	Violet
		GY	Grey
		WH	White
		PK	Pink
		GNYE	Green/Yellow

## Mounting

