

Soundpipe for U1KT

Z1KG001

Part Number



- **Double-sided adhesive tape included for easy installation**
- **For sensor U1KT**
- **Narrow sonic cone for precise and contactless measurement**
- **Width of soundpipe and U1KT sensor is still 12 mm**

The Z1KG001 sound pipe is used to reduce the sonic cone of our U1KT sensors. Targeted sound guidance enables you to precisely measure and detect small openings and boreholes as well as detect fill levels in small containers. Our ultrasonic sensors are perfect for measuring fill levels and monitoring heights in transparent materials, or for use in dusty environments. The soundpipe matches the width of the sensor, which saves space when installed within the application using standard mounting technology.

Technical Data

Ultrasonic Data

Working range, reflex sensor 35...240 mm

Working range, through-beam sensor 1...600 mm

Reproducibility maximum 4 mm

Linearity Deviation 4 mm

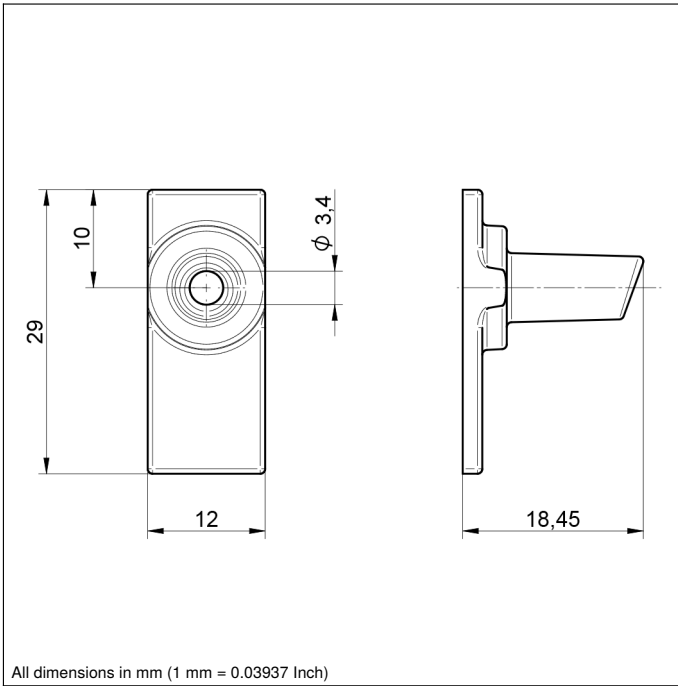
Electrical Data

Temperature Range - 30...60 °C

Mechanical Data

Housing Material Plastic

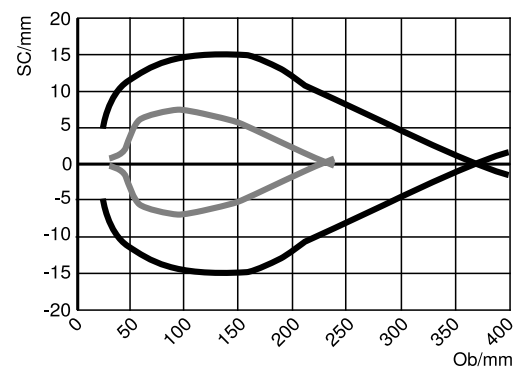
Degree of Protection IP68



All dimensions in mm (1 mm = 0.03937 Inch)

Characteristic response curve

Characteristic curves show the position of the front edge of the measured object (100 × 100 mm plate) at the time of switching.
Z1KG



Ob = Object

Sc = Sonic cone width

— Narrow sonic cone U1KT without soundpipe

— Narrow sonic cone U1KT with soundpipe

