

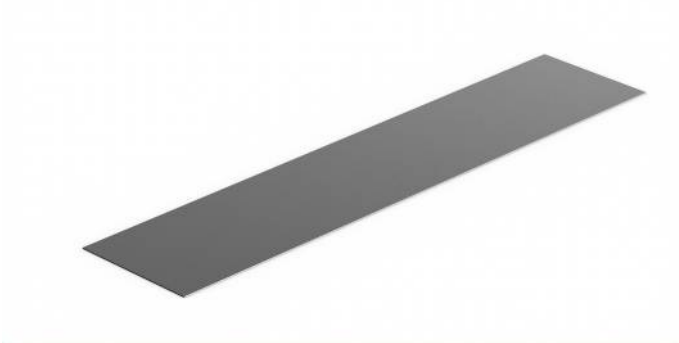
# Reflector Foil

230 × 50 mm

## ZRDF10K01

### Mechanical Data

Structure	Continuous Structure
Mounting Type	self-adhesive
Orientation with respect to the sensor	horizontal; vertical
Material	Plastic
Temperature Range	-20...60 °C
Packaging unit	1 Piece



- **Self-adhesive**

